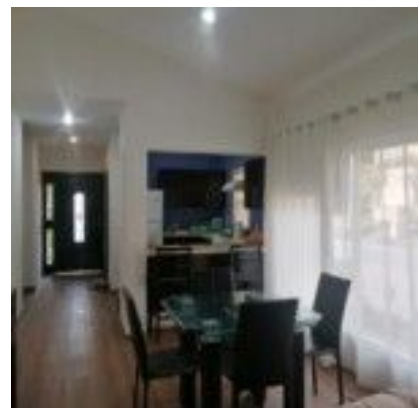


# Sierra Lake

## \$135,897.00USD



Address: Carretera Chapala-Jocotepec 117 117-86



### Extras:

Prices subject to changes without previous notice. Information is not official, subject to unintentional errors / omissions.

**PROPERTY INFORMATION**

Property Type	<b>HOMES</b>
Status	<b>FOR SALE</b>
Bedrooms:	<b>2</b>
Bathrooms:	<b>2</b>
Const m <sup>2</sup>	<b>140</b>
Lot m <sup>2</sup>	<b>90</b>

**FEATURES**

A/C
Carport (2 Cars)
Den/Family Room
Furnished
Gated Community
High Speed Internet
Mountain View
Municipal Sewer
Phone Line
Pool (Common)
Security System
Terrace

**Description:** With mountain view house on one level, enjoy its large green areas with pools and terraces, tranquility and relaxation. - Lot surface 140.26 m2 - Construction: 90m2 - 1 level - Integral kitchen with stove, sink and hood, cabinets and breakfast bar - Living-dining room - 2 bathrooms - 1 bedroom - 1 T.V. room that can be converted into 2nd bedroom - Terrace - Parking for 2 cars - Service yard - On corner INSTALLATIONS: - Aluminum windows - Laminate flooring - Hydropneumatic - Stationary gas tank 100 Liters - Automatic gas boiler of 40 Liters - Internet service - Furnished CONDOMINIUM: - Common area with garden, pool and terrace. - Security 24/7 - Condominium well water - Municipal sewerage - Maintenance fee of \$ 1,500 pesos monthly includes water - Mountain View



**Address:** Carretera Chapala-Jocotepec 117 117-86